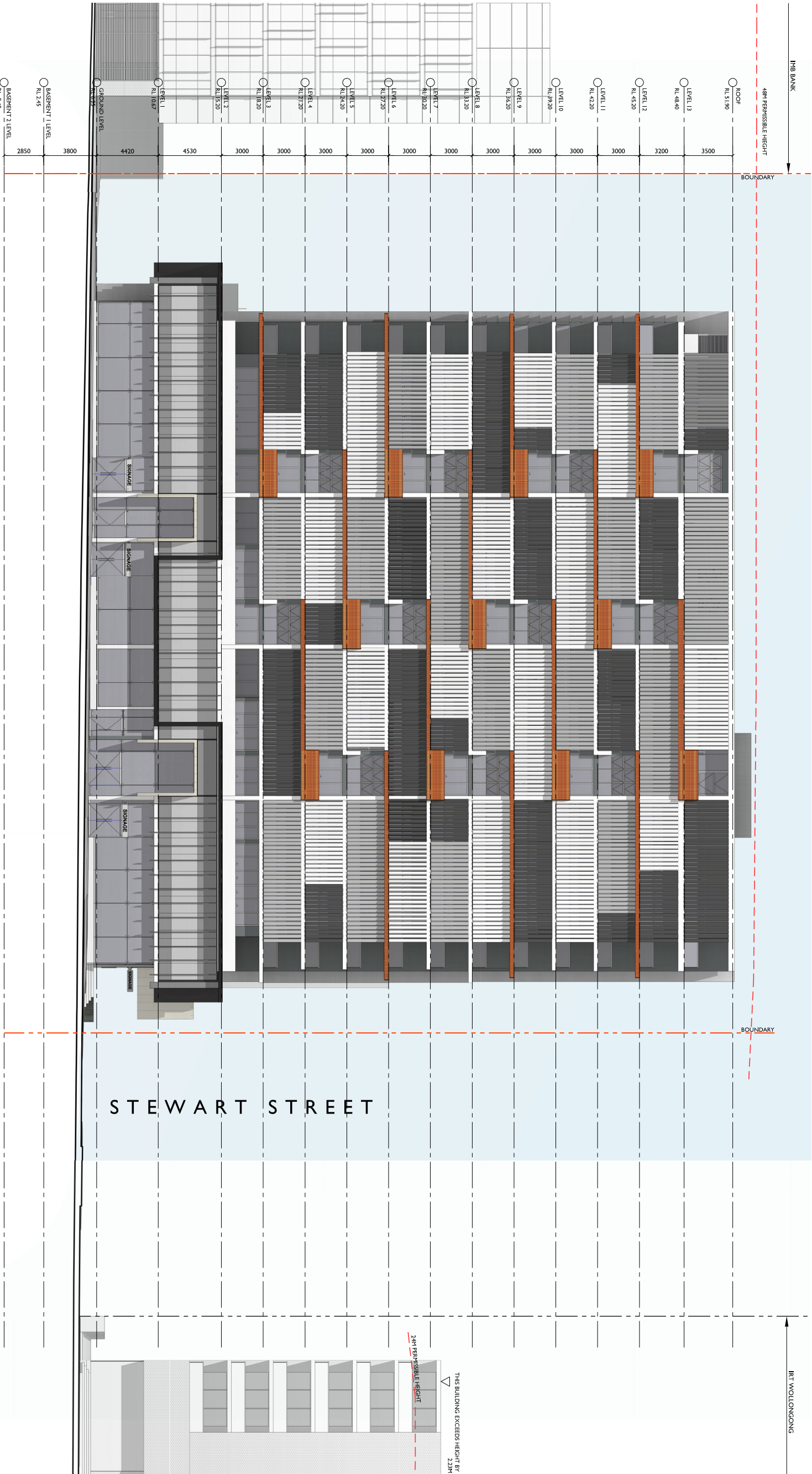


ISSUE	DATE	DESCRIPTION
A	20.12.18	ISSUED FOR DA
B	26.04.19	AMENDED FOR DA
C	22.10.19	AMENDED FOR DA

NOT FOR CONSTRUCTION



WEST ELEVATION

KEMBLA STREET ASPECT

ISSUE	DATE	DESCRIPTION
A	20.12.18	ISSUED FOR DA
B	26.04.19	AMENDED FOR DA
C	22.10.19	AMENDED FOR DA

NOT FOR CONSTRUCTION

94 Kambla St., Wollongong NSW 2500 PO Box 3061 Wollongong
 Ph: 02 4228 6400 fax: 02 4228 6455 www.admarchitects.com.au

Project
PROPOSED MIXED USE BUILDING
COMPRISING OF RESIDENTIAL APARTMENTS
ABOVE COMMERCIAL PREMISES
AND CARPARKING

At:
LOT 502. D.P. 845275
CORNER KEMBLA AND STEWART STREET
WOLLONGONG
For

CITY INVESTMENTS PTY. LTD

DEVELOPMENT APPLICATION WEST ELEVATION

Scale	I:300 @ A3	Date	OCTOBER 2019
Drawn	LGD SJ	Checked	ADM
Project No.	2017-02	Drawing No.	A-201
		Issue	C

copyright of adm architect